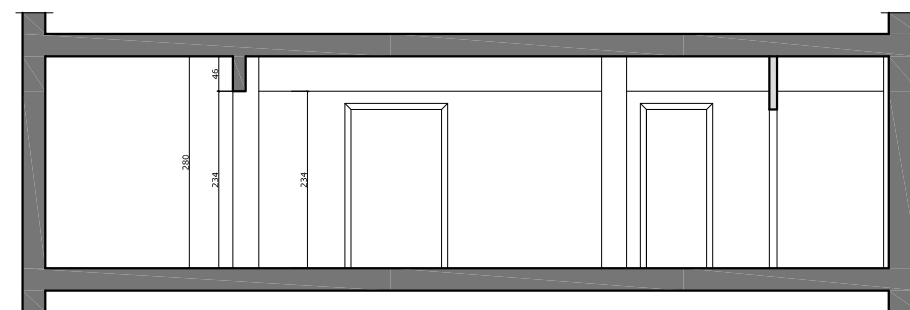
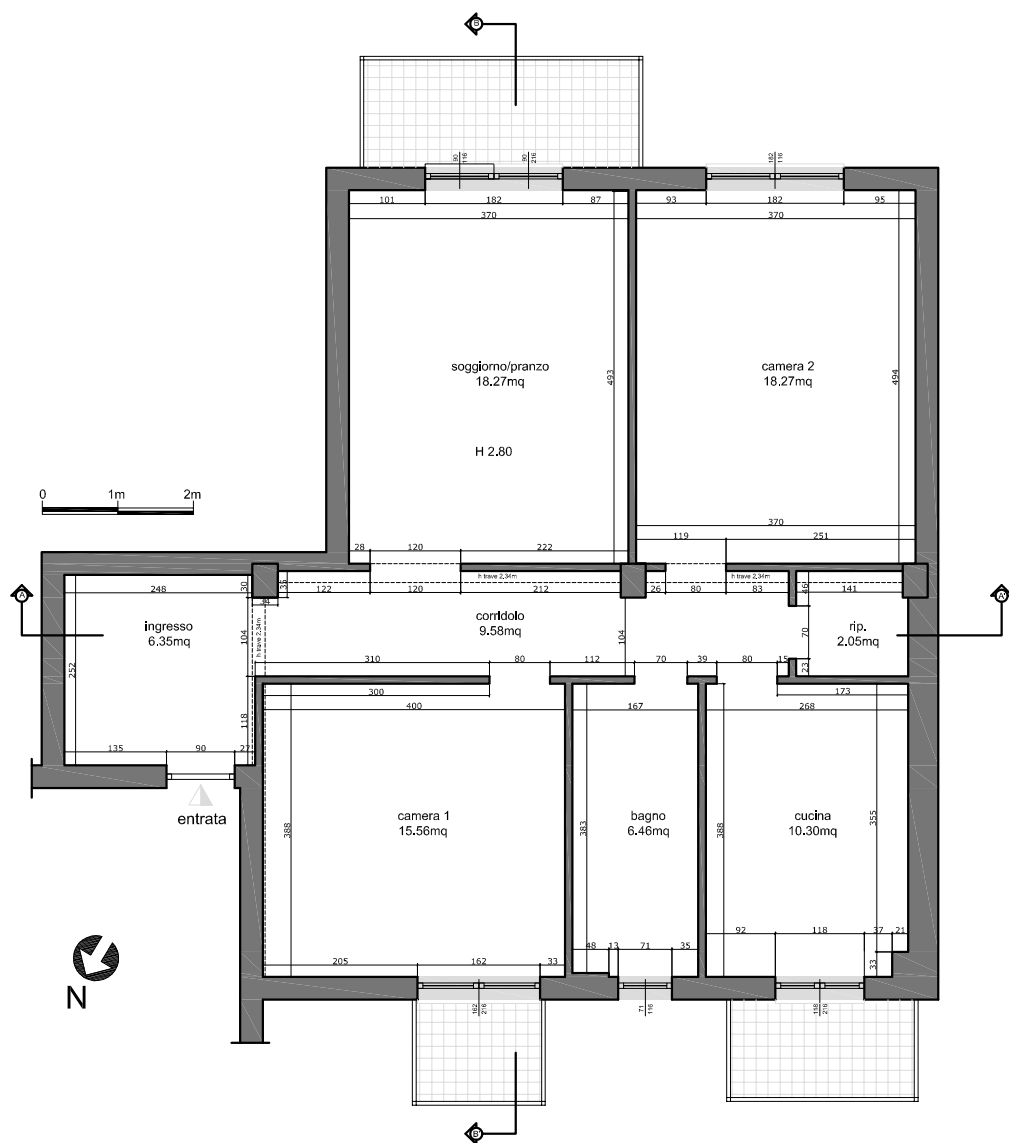
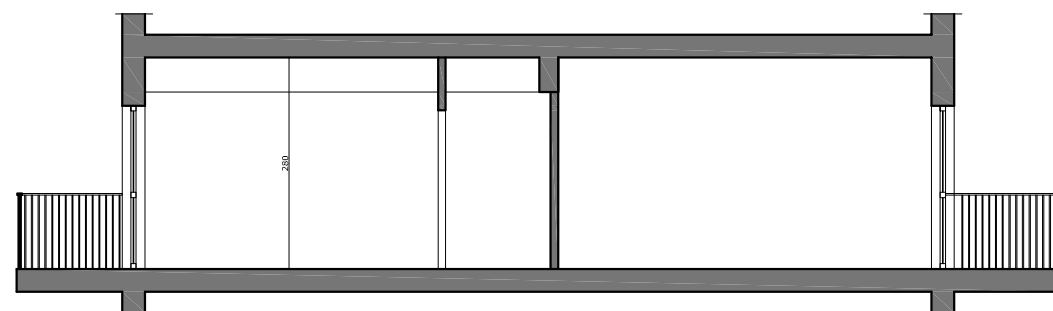




Livello_medium



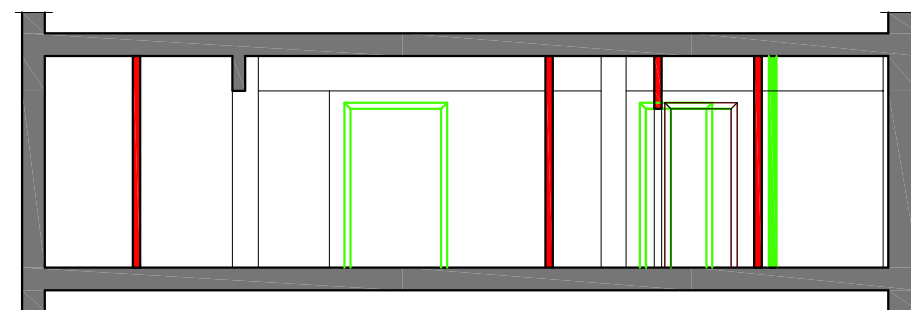
Sezione A-A'



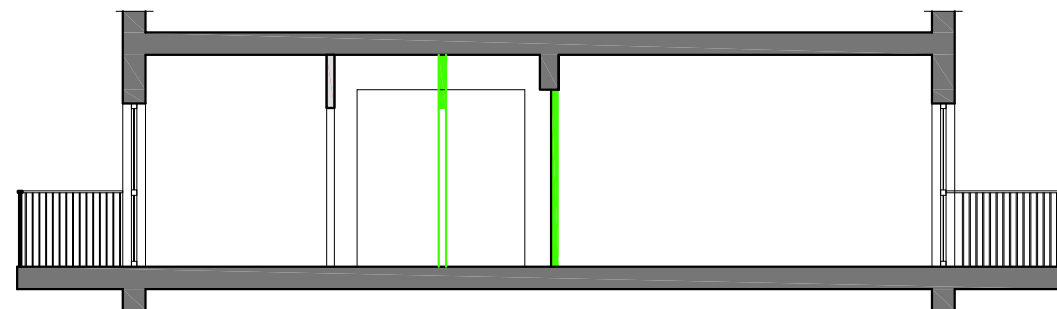
Sezione B-B'

Pianta e sezioni stato di fatto

foglio ... part. ... sub.	
VANI	superficie utile (S.U)
INGRESSO	6,35
CUCINA	10,30
BAGNO	6,46
SOGGIORNO PRANZO	18,27
CAMERA 1	15,56
CAMERA 2	18,27
CORRIDOIO	9,58
RIPOSTIGLIO	2,05
TOTALE SUPERFICIE UTILE	86,84

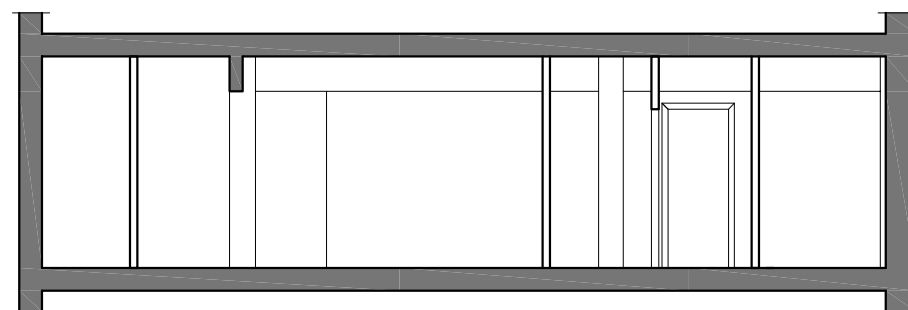
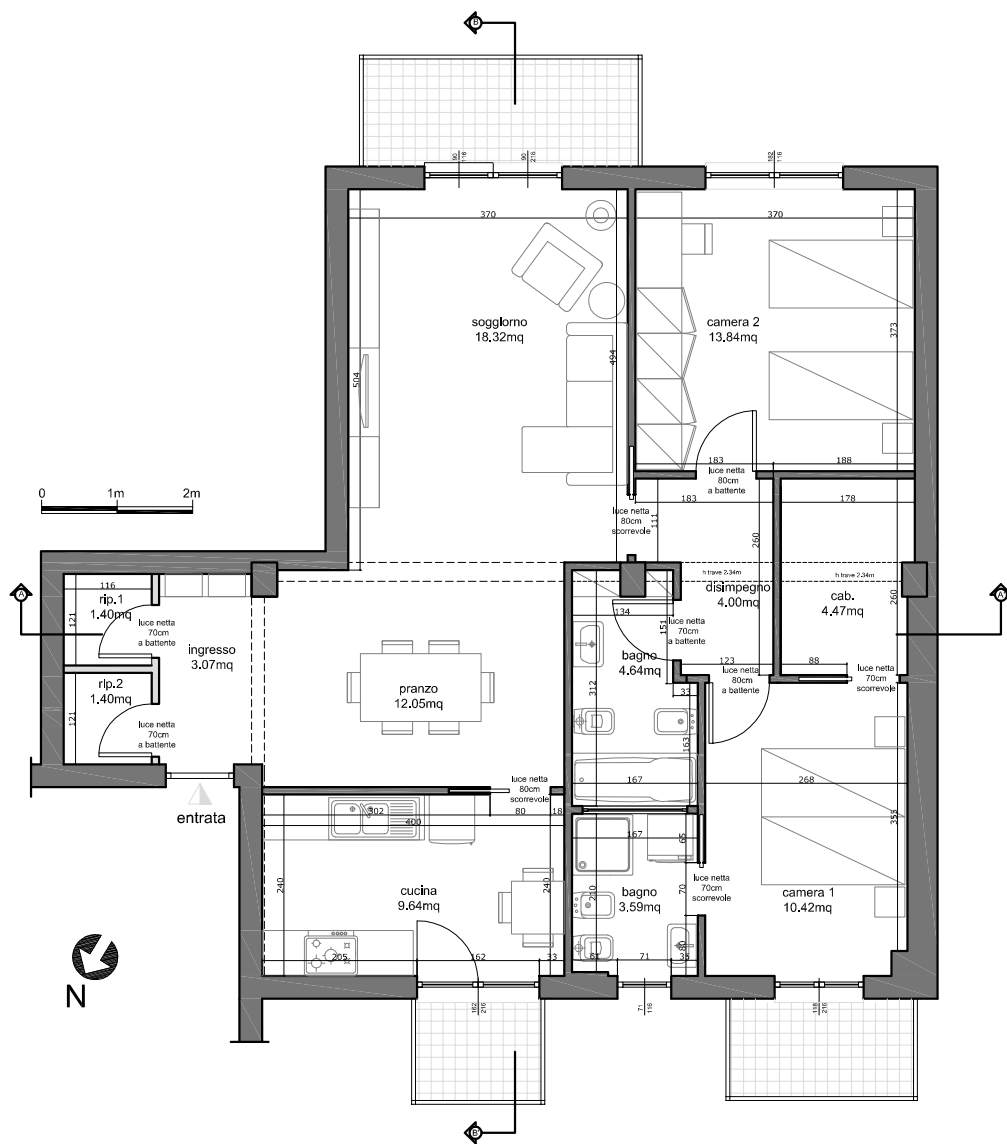


Sezione A-A'

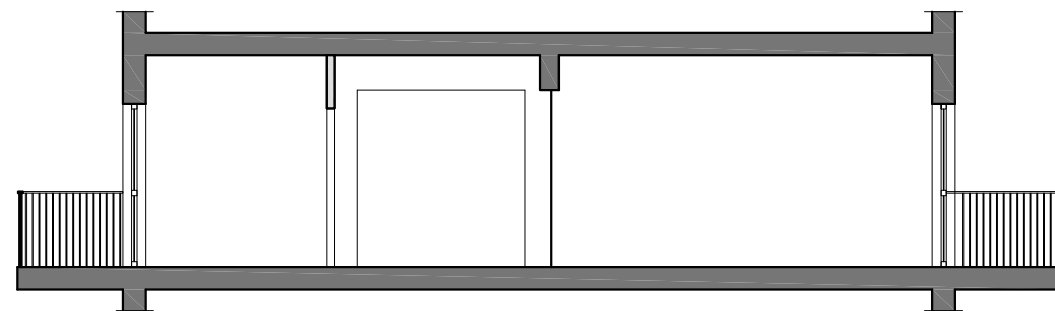


Sezione B-B'

Pianta e sezioni demolizioni e ricostruzioni



Sezione A-A'

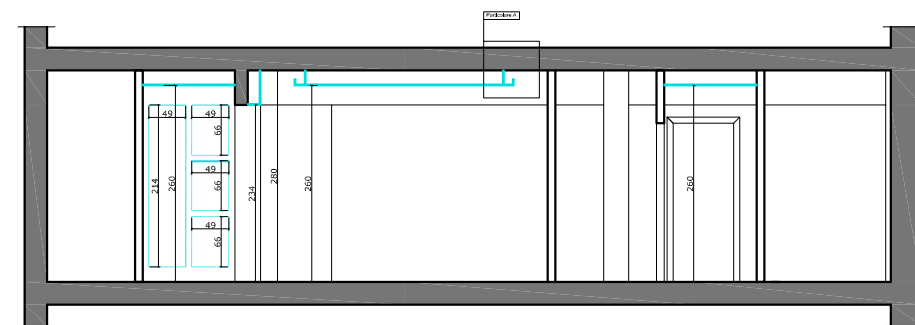
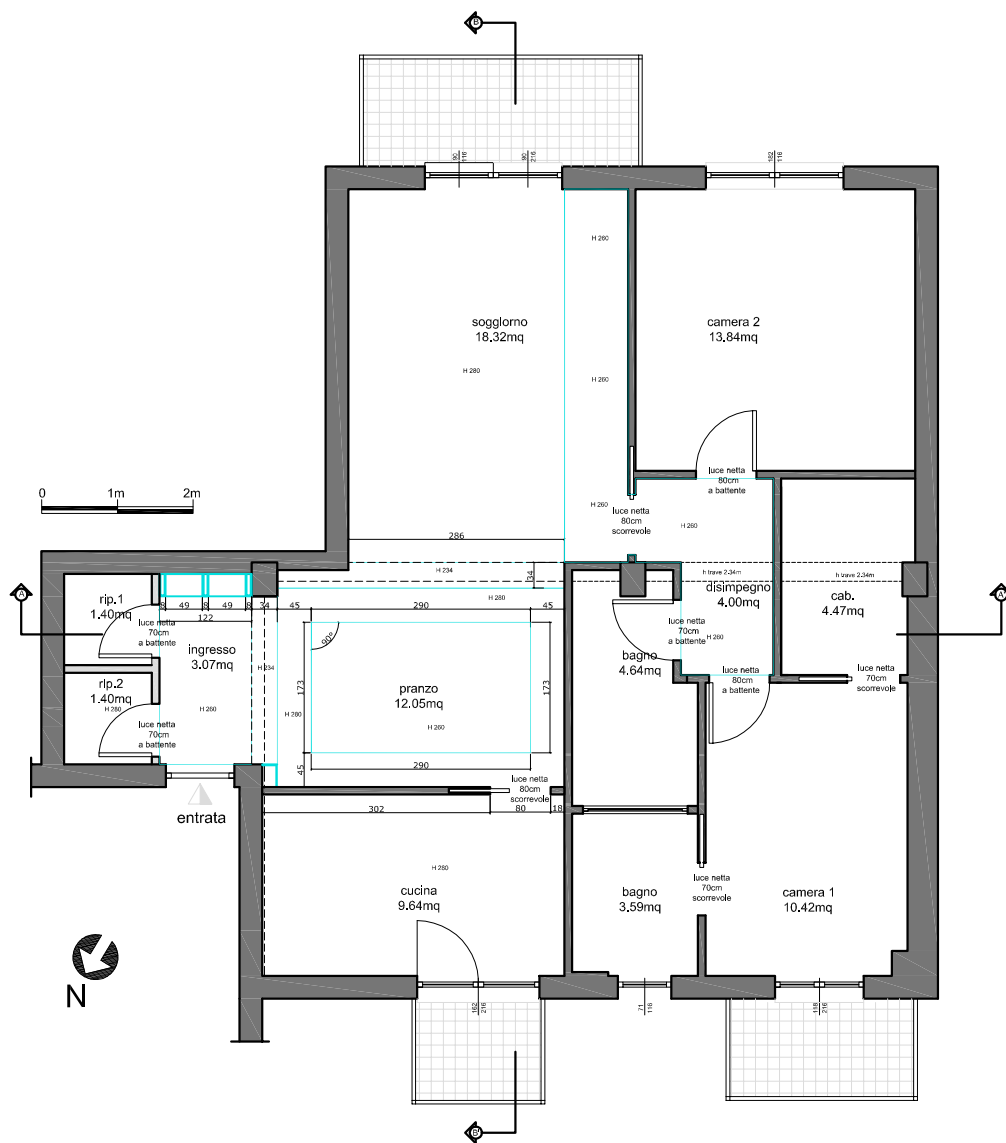


Sezione B-B'

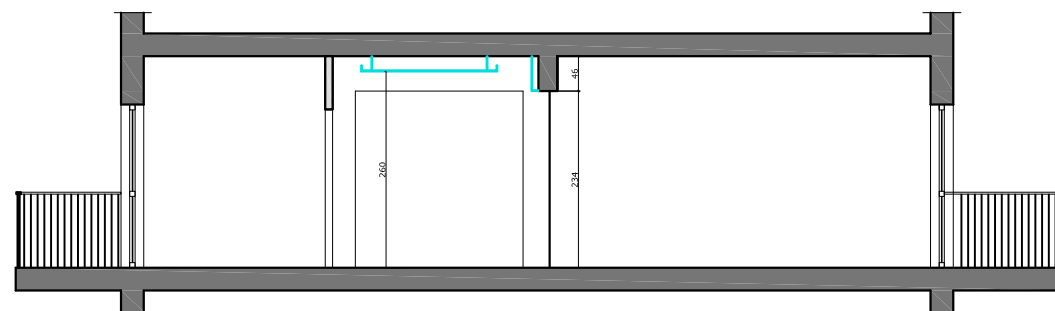


Pianta e sezioni_arredi

VANI	superficie utile (S.U)
INGRESSO	3.07
CUCINA	9.64
BAGNO 1	4.64
BAGNO 2	3.59
SOGGIORNO	18.32
PRANZO	12.05
CAMERA 1	10.42
CABINA ARMADIO	4.47
CAMERA 2	13.84
DISIMPEGNO	4.00
RIPOSTIGLIO	2.93
TOTALE SUPERFICIE UTILE	86.97

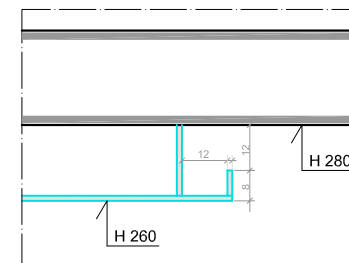


Sezione A-A'

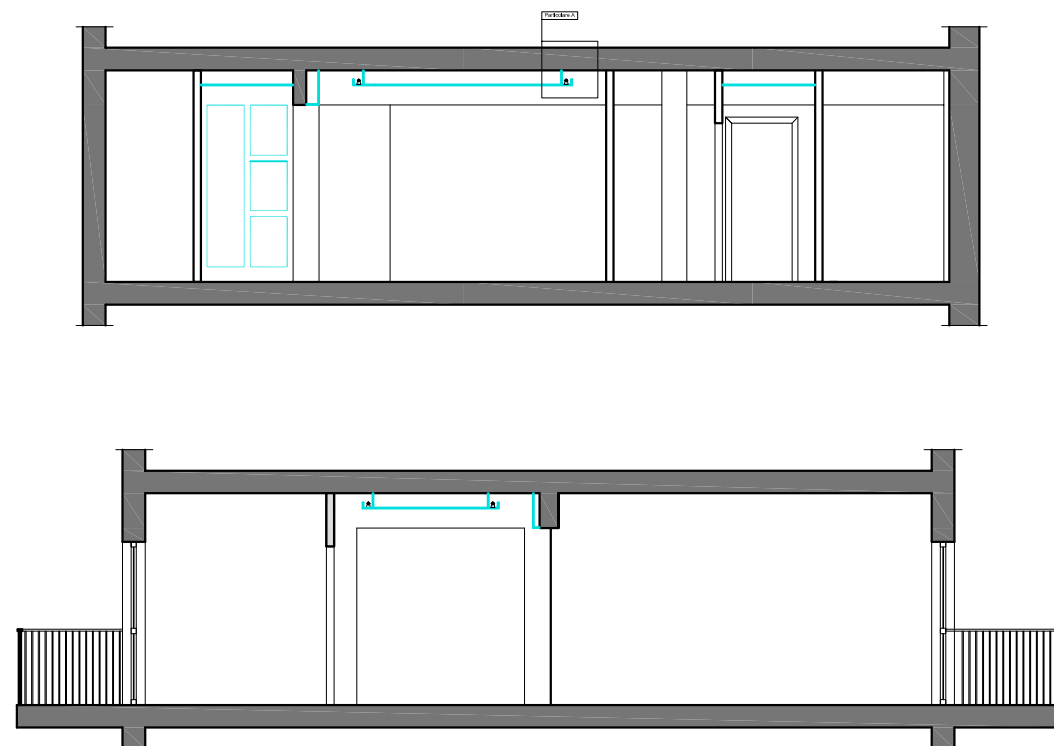
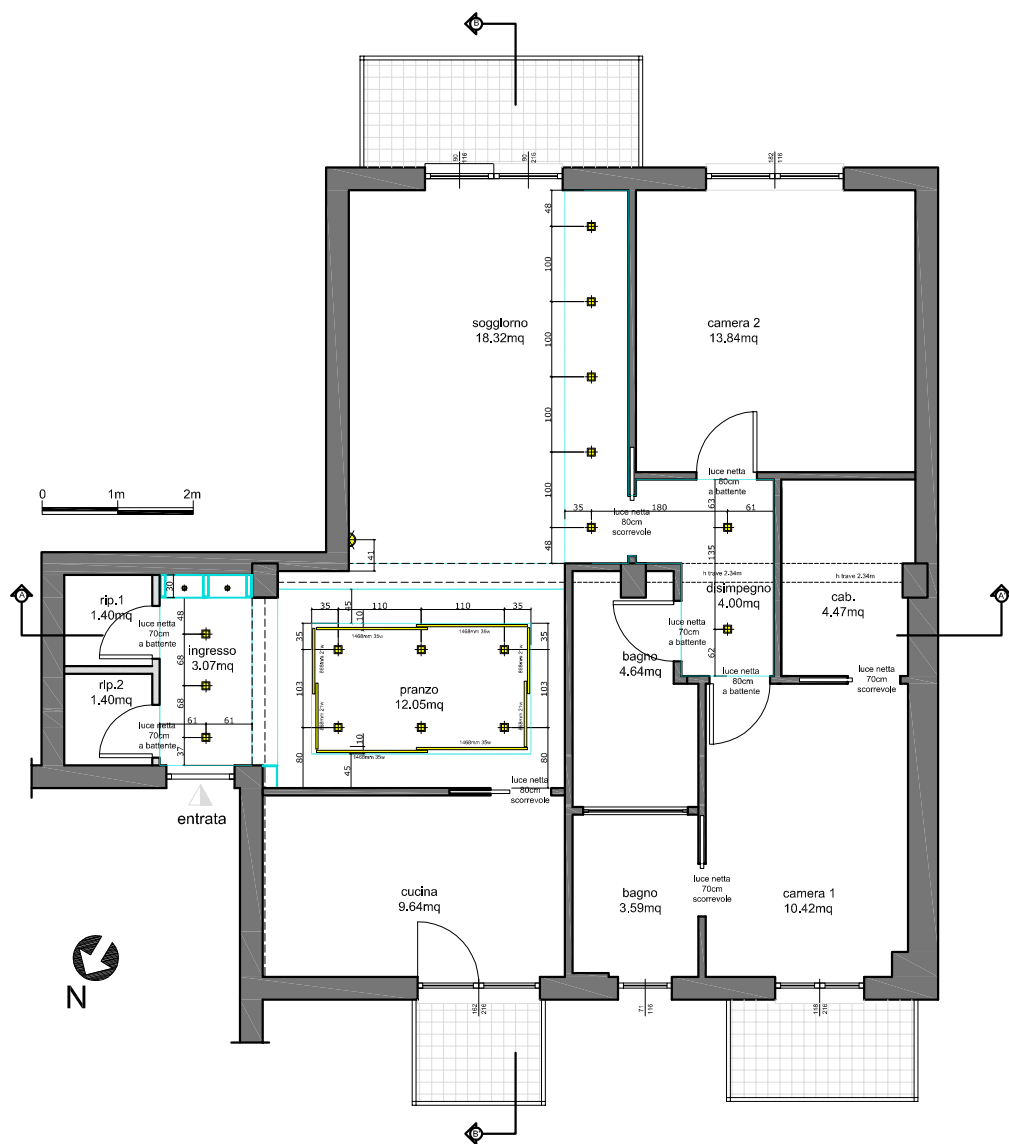






Sezione B-B'

PARTICOLARE A scala 1:10

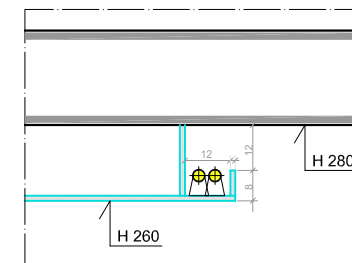


Pianta e sezioni_ controsoffitti e opere in cartongesso



LEGENDA CORPI ILLUMINANTI		
Grafica	Quantità	Tipologia
	16	Faretto Marca Viabizzuno Mod. m1 piccolo 90° bianco 50w Cod. F6,001,05 Foro 98x98
	4	Faretto Marca Viabizzuno Mod. m1 micro 90° bianco 20w Cod. F6,000,11
	8,50 ml	Tubo al neon accensione elettronica
	1	Applicque

PARTICOLARE A scala 1:10

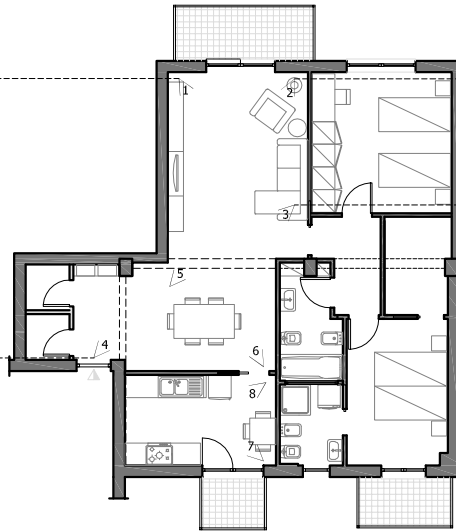




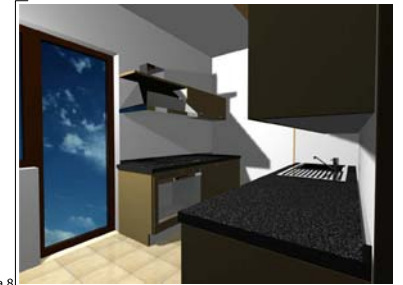
Vista 5



Vista 6



Vista 7



Vista 8

RI progetta

